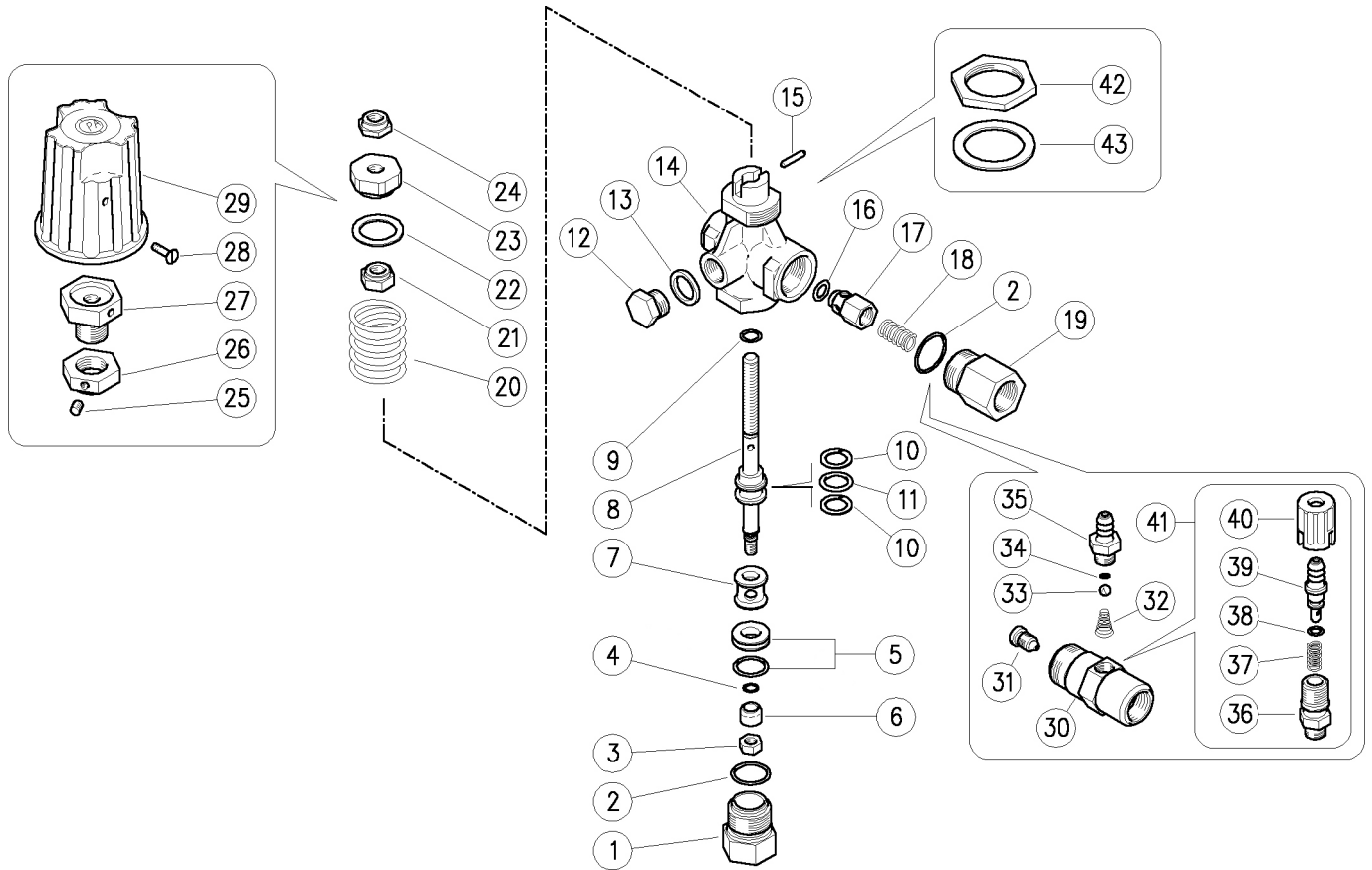


60.2200.00 VB9 unload. 3/8F Bsp

60.2250.00 VB9 unload. 3/8F Bsp +knob



Pos.	P/N	Description	Q.ty	K1	K2	K3	K4	
1	60.2204.31	Seat holder, 3/8F Bsp brass	1					3
2	10.3070.02	O-ring, 1,78x18,77 mm Ni 85	2	•				10
3	11.4540.00	Hex. nut, M6, Sst.	1					10
4	10.3001.01	O-ring, 1x4 mm Ni 85	1	•				10
5	60.2221.20	Seat+O-ring	1	•				3
6	60.2205.61	Sst shutter	1	•				1
7	60.2210.31	Spacer ring, 8,5x16,8x14,5 mm brass	1					5
8	60.2202.51	Piston, M6-M8 Sst.	1					5
9	10.3170.08	O-ring, 2,62x7,6 mm Ni 85	1	•				10
10	10.4021.00	Back-up ring, oprn. 11,5x15,9x1,2 mm	2	•				10
11	10.3175.00	O-ring, 2,62x10,77 mm	1	•				10
12	28.0013.31	Plug, brass 1/4 Bsp	1					25
13	14.3911.00	Washer, 13,5x19x1,5 mm Cu	1					10
14	60.2201.35	Housing -VB9, 3/8F-1/4F Bsp brass	1					5
15	15.1021.00	Roll pin, 3x14 mm Sst.	1					10
16	10.3213.00	O-ring, 3x6 mm	1	•				10
17	60.0052.99	Shutter pin, brass+o-ring 3x6 mm	1					10
18	60.0053.51	Spring, 0,7x9x20 mm Sst.	1					10
19	60.0058.31	Delivery coupl., 3/8F Bsp brass	1					5
20	60.2203.61	Spring, 4,2x27,4x31 mm z.pl.	1					10
21	60.2207.31	Ring nut, M8 brass	1					5
22	60.2208.84	Washer, 19x26x1,5 mm PA black	1					10

Pos.	P/N	Description	Q.ty	K1	K2	K3	K4	
23	60.2209.31	Ring nut, M8 brass (1)	1					10
24	11.4589.10	Hex. locknut, M8	1					10
25	16.2105.00	Set screw, DIN913 M5x6 mm (2)	1					10
26	60.2252.31	Ring nut, M16x1 brass (2)	1					5
27	60.2253.31	Regulating pin, brass (2)	1					10
28	16.1838.00	Screw, DIN7985 M4x10 mm z.pl. (2)	1					10
29	60.2251.84	Valve regulating knob, PA black (2)	1					5
30	21.0261.31	Inject.hous.,M22x1,5M-3/8M Bsp brass	1					3
31	21.0213.51	Nozzle, M8x1 - 2,1 mm Sst.	1					10
32	21.0160.51	Tapered spring, Sst. -inject.	1					10
33	14.7420.01	Ball, 7/32" Sst. Aisi 316	1					10
34	10.3049.00	O-ring, 1,78x5,28 mm Vi 70	1					10
35	21.0003.31	Hose barb, 8 - M12x1 mm brass	1					10
36	21.0173.31	Coupling, M12x1-1/4M Bsp brass	1					10
37	21.0158.51	Spring, 0,8x7x15 mm Sst.	1					10
38	10.3043.01	O-ring, 1,78x4,48 mm Vi 70	1					10
39	21.0155.99	Hose barb, d.8 mm brass+o-ring	1					3
40	21.0171.84	Inject.knob, 1/4F Bsp black	1					10
41	21.0100.00	Regulator+h.barb 8-M12x1mm brs. inject.	1					50
42	60.2254.31	Ring nut, M30 brass (2)	1					10
43	14.3582.00	Washer, 30,5x42x2 mm (2)	1					10

Kit	P/N	Description	
K1	60.2226.24	Spares kit -VB9 9x1pcs.	1

(1) 60.2200.00 (2) 60.2250.00