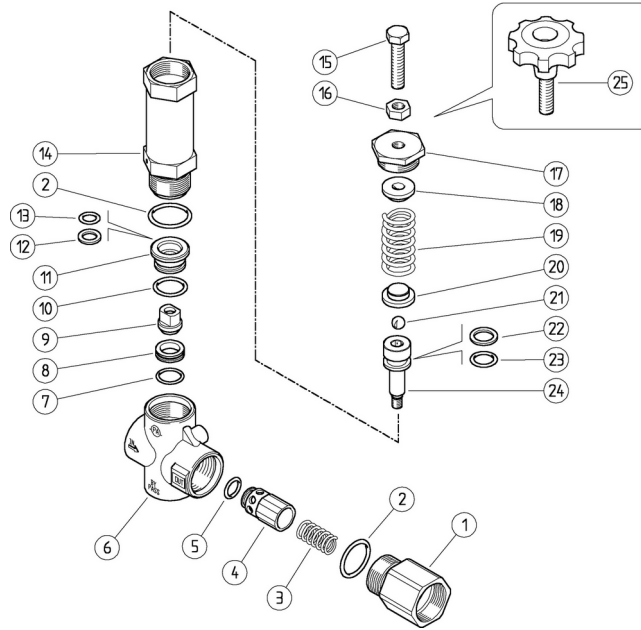


60.5000.00 VB200/150 unload. 1" F Npt  
 60.5000.10 VB200/150 unload. 1" F Bsp Viton O-Rings  
 60.5000.15 VB200/150 unload. 1" F Bsp  
 60.5020.00 VB200/150 unload. 1" F Npt +handwheel

60.5020.15 VB200/150 unloader 1" F Bsp +hand wheel  
 60.5025.00 VB200/70 unldr valve, 1" Npt  
 60.5025.15 VB200/70 unldr valve, 1" Bsp FF



Pos.	P/N	Description	Q.ty	K1	K2	K3	K4	
1	60.5014.31R	Shutter coupl., 1"Npt F brass	1					3
1	60.5026.31R	Coupling, 1"Bsp F brass (1,2)	1					3
2	10.3206.01R	O-ring, 2,62x28,25 mm	2	•	•			10
3	60.5013.51R	Spring, 1,3x18x29 mm Sst.	1					10
4	60.5012.99R	Shutter pin, brass+or 5,33x12,06 mm N	1					5
5	10.3314.00R	O-ring, 5,33x12,06 mm	1	•				10
5	10.3314.10R	O-ring, 5,33x12,06 mm Vi 90 (3)	1	•				10
6	60.5001.35R	Housing-VB200/60-150, 1"Npt brass	1					1
6	60.5024.35R	Hous.-VB200/150-1"Bsp FF (1,2)	1					1
7	10.3072.01R	O-ring, 1,78x20,35 mm Ni 85	1	•	•			10
8	60.5002.51R	Seat, 15,8x23x6 mm Sst.	1	•	•			5
9	60.5003.51R	Shutter pin, M8 Sst.	1	•	•			3
10	10.3195.01R	O-ring, 2,62x20,29 mm Ni 90	1	•	•			10
11	60.5010.31R	Reduction bushing, brass	1					10
12	10.4080.00R	Back-up ring, 12x18,2x2 mm	1	•	•			10
13	10.3234.00R	O-ring, 3,53x10,69 mm	1	•				10

Pos.	P/N	Description	Q.ty	K1	K2	K3	K4	
13	10.3234.10R	O-ring, 3,53x10,69 mm Vi 70 (3)	1		•			10
14	60.5009.31R	Piston holder, brass	1					3
15	60.5011.61R	Valve regulating screw, M10x44 z.pl. (4)	1					10
16	11.4629.00R	Hex. nut, M10	1					10
17	60.5008.31R	Upper plug, M10 brass	1					10
18	60.5005.31R	Spring guide spacer, brass	1					10
19	60.5006.61R	Spring, 6x30x62 mm	1					5
19	60.5031.61R	Spring 5x23x62 mm (5,2)	1					1
20	60.5007.31R	Spring guide spacer, brass	1					10
21	14.7461.00R	Ball, 13/32" Sst.	1					10
22	10.4081.00R	Back-up ring, 15,8x22x2 mm	1	•	•			10
23	10.3237.00R	O-ring, 3,53x15,47 mm	1	•				10
23	10.3237.10R	O-ring, 3,53x15,47 mm Vi 70 (3)	1	•				10
24	60.5004.51R	Piston, M8 Sst.	1					5
25	60.5021.22	Handwheel, 70mm -M10x44 (6,7)	1					2

Kit	P/N	Description	
K1	60.5016.24	Spares kit -VB200/150, 10x1pcs.	1
K2	60.5019.24	Spares kit -VB200/150, or. vit.10x1pcs.	1

(1) 60.5000.15 (2) 60.5025.15 (3) 60.5000.10 (4) 60.5000.00 (5) 60.5025.00 (6) 60.5020.00 (7) 60.5020.15