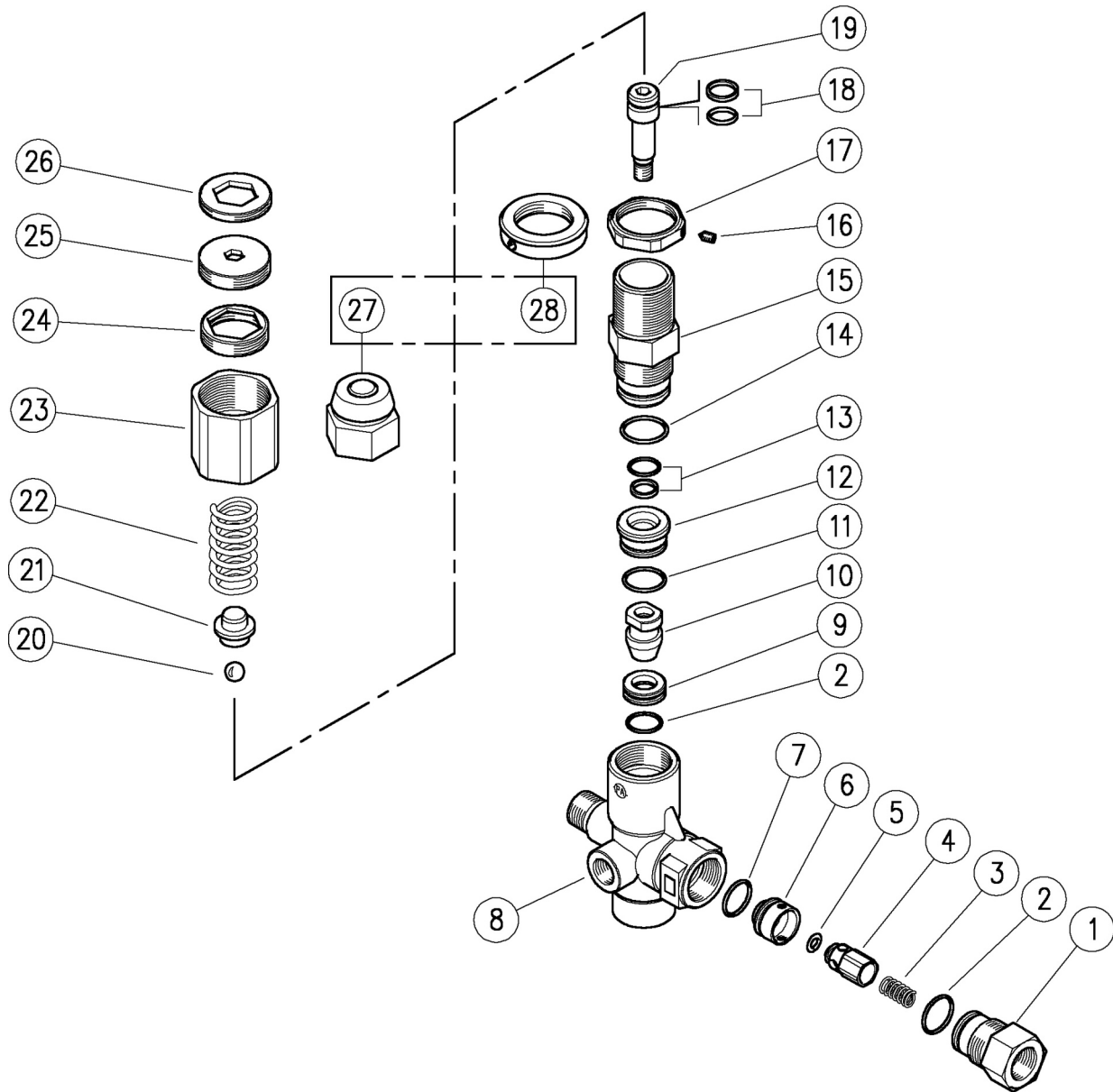


60.1750.00 VB350 S unload. 3/8MF Bsp byp:1/2F

60.1800.00 VB350 S unld.3/8MF Bsp byp:1/2F max/min



Pos.	P/N	Description	Q.ty	K1
1	60.1811.31	Shutter coupl., 3/8F Bsp brass	1	
2	10.3066.01	O-ring, 1,78x15,6 mm Ni 85	2	•
3	60.0053.51	Spring, 0,7x9x20 mm Sst.	1	
4	60.0052.51	Shutter pin, Sst.	1	
5	10.3213.08	O-ring, 3x6 mm Ni 90	1	•
6	60.1807.51	Shutter seat, Sst.	1	
7	10.3064.01	O-ring, 1,78x14 mm Ni 85	1	•
8	60.1801.35	Hous. -VB350, 3/8M c/sunk+1/4F Bsp brs.	1	
9	60.1809.51	Seat, 11,6x19x6 mm Sst.	1	•
10	60.1808.51	Shutter pin, M8 Sst.	1	•
11	10.3068.01	O-ring, 1,78x17,17 mm Ni 85	1	•
12	60.1810.31	Spacer ring, 10,3x23,4x12,5 mm brass	1	
13	60.0979.24	Stem seal, 10x14,9x2,2 mm+O-ring	1	•
14	10.3072.01	O-ring, 1,78x20,35 mm Ni 85	1	•

Pos.	P/N	Description	Q.ty	K1
15	60.1805.31	Piston holder, brass	1	
16	16.2100.00	Set screw, DIN914 M4x4 mm	1	
17	60.1814.31	Ring nut, M27x1 brass	1	
18	60.0978.24	Piston seal, 9x14x2,2 mm+O-ring	1	•
19	60.1806.51	Piston, M8 Sst.	1	
20	14.7443.10	Ball, 11/32" Sst.	1	•
21	60.1813.31	Spring rest pin, brass	1	
22	60.1812.61	Spring, 4,5x15,8x47mm	1	
23	60.1804.31	Valve regulating ring nut, brass	1	
24	60.1803.31	Ring nut, M27x1 brass	1	
25	60.1815.31	Lower adjustment ring nut, M32x1 brass	1	
26	60.1816.31	Upper adjustment ring nut, M32x1 brass	1	
27	60.1727.31	Valve regulating insert, brass (1)	1	
28	60.1728.31	Ring nut, M27x1 brass (1)	1	

Kit	P/N	Description	Q.ty
K1	60.1818.24	Spares kit -VB350 12x1pcs.	1

(1) 60.1750.00