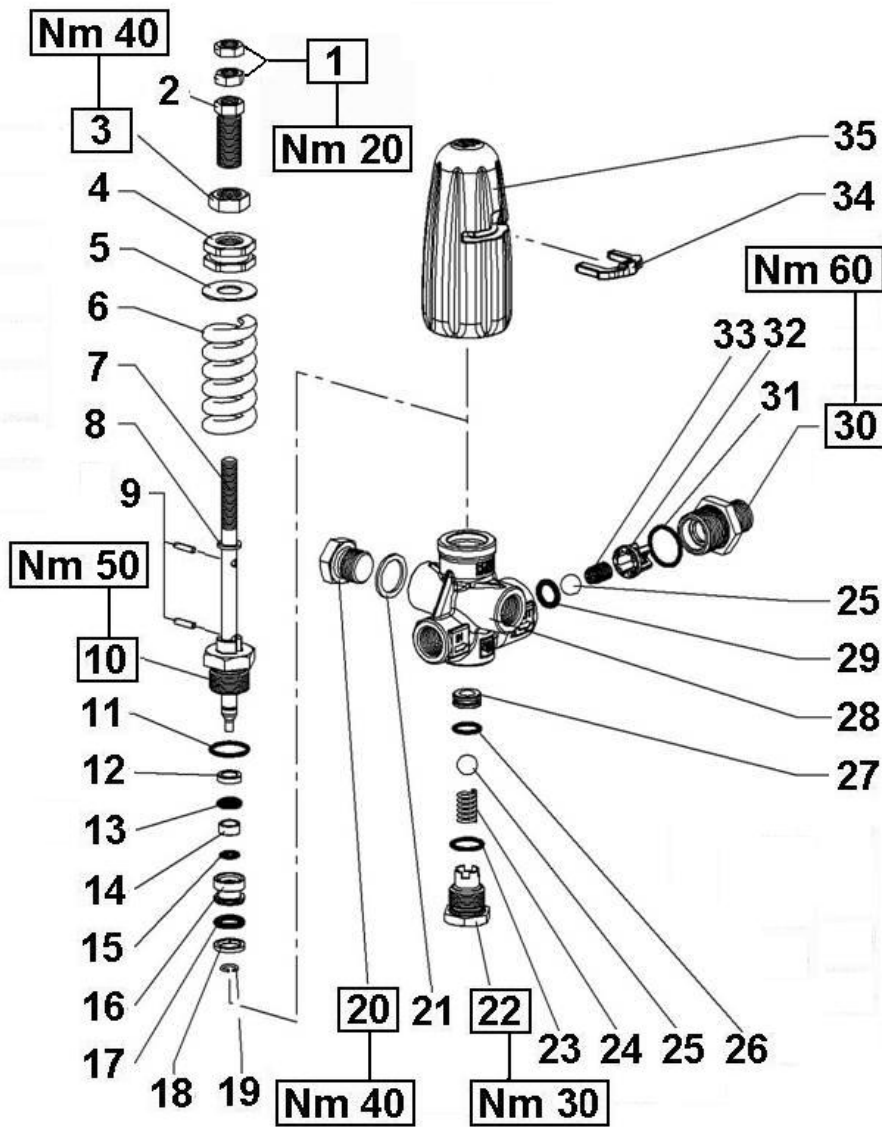


**H284****KIT RICAMBI – SPARE KITS**

KIT NR.	KIT 245
Posizioni include Positions included	6 – 11 – 12 – 13 – 15 17 – 18 – 19 – 23 – 24 25 – 26 – 27 – 29 – 31 32 – 33
Nr. Pcs.	1

**DISTINTA – SPARE PARTS**

POS	COD.	DESCRIZIONE – DESCRIPTION KIT	NR
1	92.2200.00	Dado M8x5x13 UNI 5589	2
2	36.3262.64	Vite di taratura pressione massima	1
3	92.2400.00	Dado M12x7x19 UNI 5589	1
4	36.3261.64	Ghiera regolazione pressione	1
5	96.7780.00	Rosetta Ø 28x12.5x1	1
6	94.7509.00	Molla Ø 21x60	245 1
7	36.3263.73	Asta valvola	1
8	96.7037.00	Rosetta Ø 8.5x12x1.5	1
9	97.6658.00	Spina Ø 3x12 UNI 6876	2
10	36.3356.70	Boccola guida asta	1
11	90.3595.00	OR Ø 17.17x1.78 (2068)	245 1
12	90.5036.00	Anello antiest. Ø 8x12.4x2.5/3	245 1
13	90.3818.00	OR Ø 7.59x2.62 (3030)	245 1
14	36.3357.70	Distanziale	1
15	90.3576.00	OR Ø 6.75x1.78 (106)	245 1
16	36.3264.66	Pistoncino di comando	1
17	90.3825.00	OR Ø 10.78x2.62 (3043)	245 1
18	90.5070.00	Anello antiest. Ø 11.6x16x1.5/2	245 1

POS	COD.	DESCRIZIONE – DESCRIPTION KIT	NR
19	90.0063.00	Anello seeger Ø 8	245 1
20	98.2100.00	Tappo G 3/8"x13	1
21	96.7380.00	Rosetta Ø 17.5x23x1.5	1
22	36.3268.70	Tappo M18x1.5	1
23	90.3592.00	OR Ø 14x1.78 (2056)	245 1
24	94.7360.00	Molla Ø 8.6x16.5	245 1
25	97.4838.00	Sfera Ø 13/32"	245 2
26	90.3585.00	OR Ø 10.82x1.78 (2043)	245 1
27	36.3265.66	Sede valvola	245 1
28	36.3259.41	Corpo valvola	1
29	90.3823.00	OR Ø 9.92x2.62 (112)	245 1
30	36.3267.70	Nipplo G 3/8"	1
31	90.3597.00	OR Ø 18.77x1.78 (2075)	245 1
32	36.3104.51	Guida valvola	245 1
33	94.7355.00	Molla Ø 8.5x12	245 1
34	36.3297.51	Forcella	1
35	36.3260.51	Pomolo	1